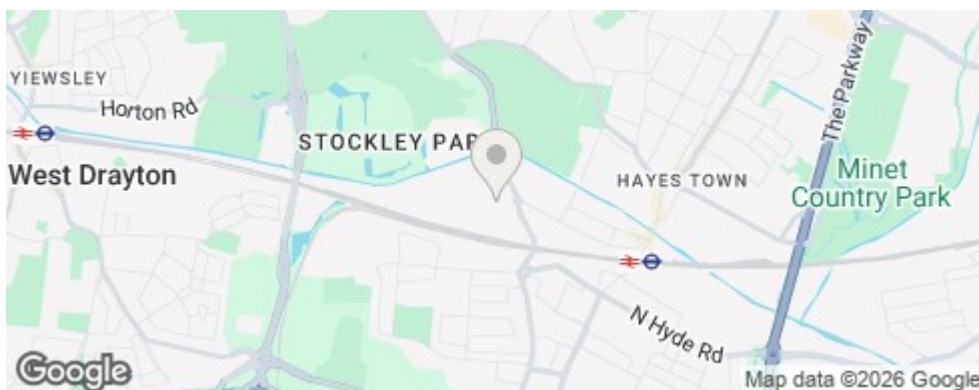
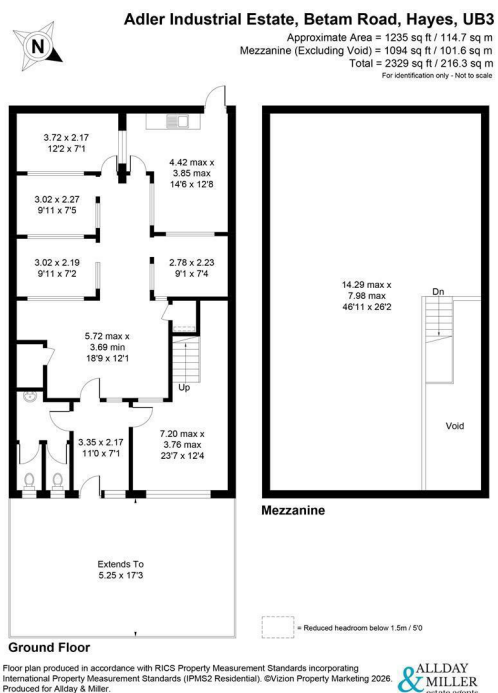


£515,000

Betam Road

Hayes, UB3 1ST





Agents Note: Whilst every care has been taken to prepare these particulars, they are for guidance purposes only. All measurements are approximate and are for general guidance purposes only and whilst every care has been taken to ensure their accuracy, they should not be relied upon and potential buyers/tenants are advised to recheck the measurements

Energy Efficiency Rating		
	Current	Potential
Very energy efficient - lower running costs		
(92 plus) A		
(81-91) B		
(69-80) C		
(55-68) D		
(39-54) E		
(21-38) F		
(1-20) G		
Not energy efficient - higher running costs		
England & Wales	EU Directive 2002/91/EC	

**Shaw
& Co**
ESTATE
AGENTS

OFFICE ADDRESS
10 Central Parade
New Heston Road
Heston
Middlesex
TW5 0LH

OFFICE DETAILS
0208 570 7258
heston@shawandcoestates.com